



# CorePro LED PLL



## CorePro LED PLL Mains 24W 840 4P

Philips CorePro LED PLL is the ideal uplamping solution for downlights & luminaires in a wide range of general lighting applications. It integrates a LED light source into a traditional fluorescent form factor to offer superb energy savings over a lifetime that's twice as long as fluorescent alternatives.

### Product data

General information	
Cap base	2G11 [2G11]
Nominal lifetime	30,000 h
Switching Cycle	200,000
Lighting Technology	LED
Flux measurement reference	Sphere

Light technical	
Colour Code	840 [CCT of 4000K]
Beam angle (nom.)	160 degree(s)
Luminous Flux	3,400 lm
Colour designation	Cool White (CW)
Correlated Colour Temperature	4000 K
Luminous Efficacy (rated) (Nom)	141 lm/W
Colour consistency	<6
Colour rendering index (CRI)	80
LLMF at end of nominal lifetime (nom.)	70 %

Operating and electrical	
Line Frequency	50 to 60 Hz
Input frequency	50 to 60 Hz
Power Consumption	24 W
Lamp current (nom.)	127 mA

Starting time (nom.)	0.5 s
Warm-up time to 60% light	0.5 s
Power Factor (Fraction)	0.9
Voltage (nom.)	220-240 V

Temperature	
Ambient temperature range	-20°C to 45°C
T-Case maximum (nom.)	75 °C

Controls and dimming	
Dimmable	No

Mechanical and housing	
Lamp Finish	Frosted
Bulb material	Glass
Product length	500 mm
Bulb shape	Tube, single-ended

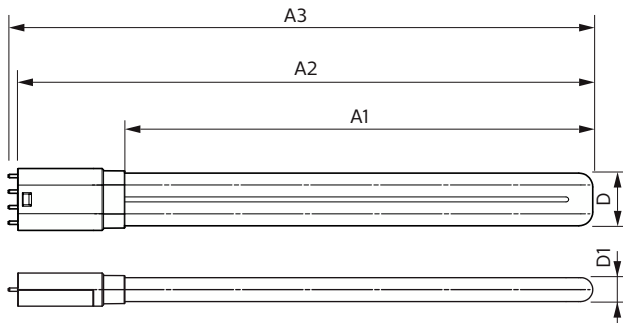
Approval and application	
Energy Efficiency Class	D
Energy-saving product	Yes
Approval marks	RoHS compliance TUV CE marking KEMA Keur certificate

# CorePro LED PLL

Energy consumption kWh/1,000 hours	24 kWh
EPREL registration number	1370830
EU RoHS compliant	Yes
<b>Product data</b>	
Full EOC	872016915713200
Order product name	CorePro LED PLL Mains 24W 840 4P
Order code	15713200

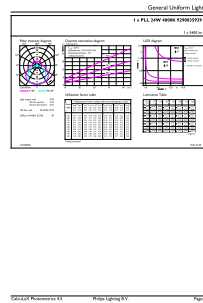
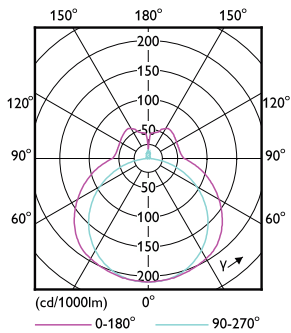
SAP numerator – quantity per pack	1
Numerator – packs per outer box	10
Material number (12NC)	929003592902
Full product name	CorePro LED PLL Mains 24W 840 4P
EAN/UPC - Case	8720169157149

## Dimensional drawing



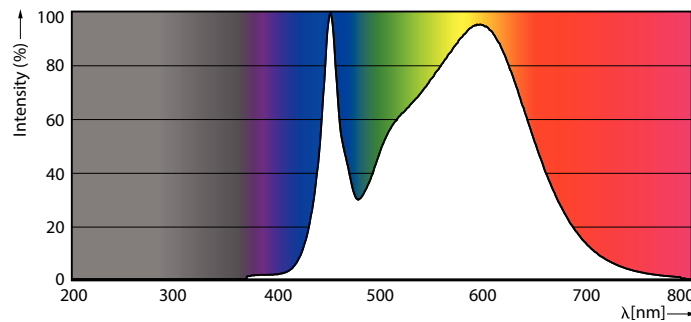
Product	D1	D2	A1	A2	A3
CorePro LED PLL Mains 24W 840 4P	17 mm		453 mm	528 mm	535 mm

## Photometric data



## Light Distribution Diagram

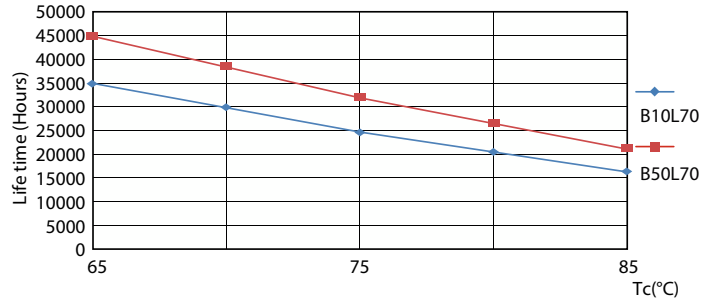
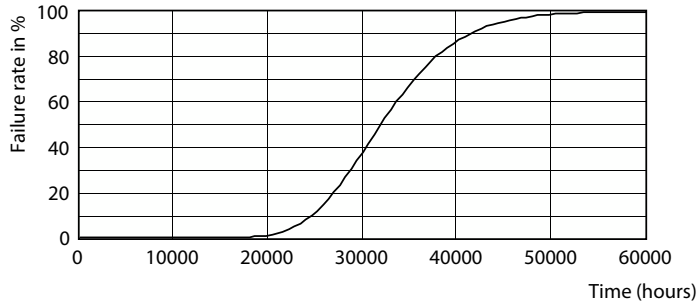
## General uniform lighting - CorePro LED PLL Mains 24W 840 4P



## Spectral Power Distribution Colour

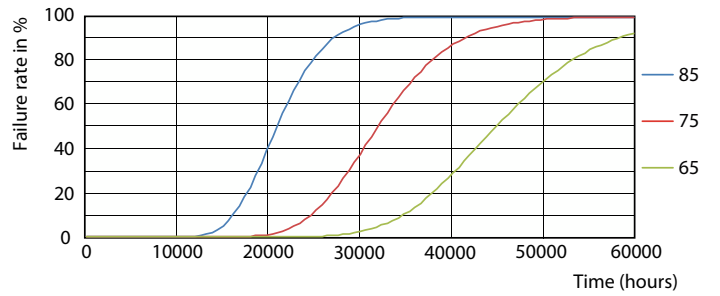
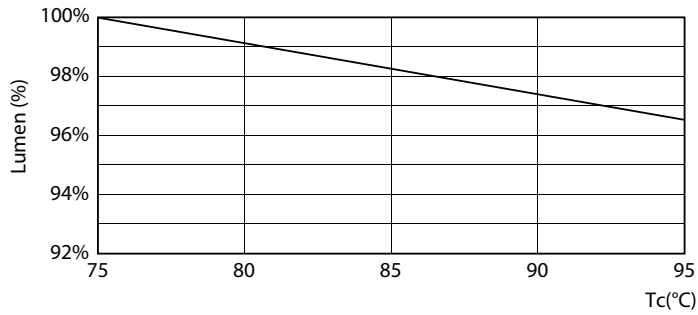
# CorePro LED PLL

## Lifetime



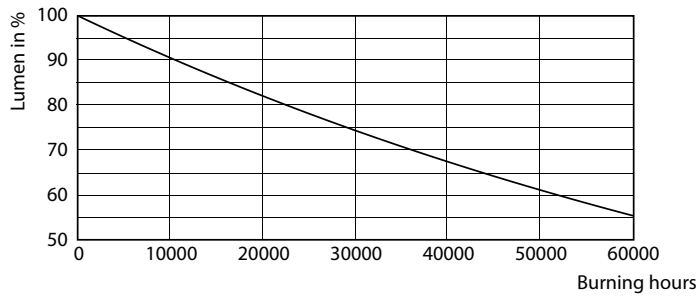
Life Expectancy Diagram - CorePro LED PLL Mains 24W 840 4P

Life Expectancy Diagram



Lumen Maintenance Diagram

Life Expectancy Diagram



Lumen Maintenance Diagram - CorePro LED PLL Mains 24W 840 4P

